

**Medical technology**



Etched parts



Screen printing



Pad printing



Digital printing

# Union-Klischee

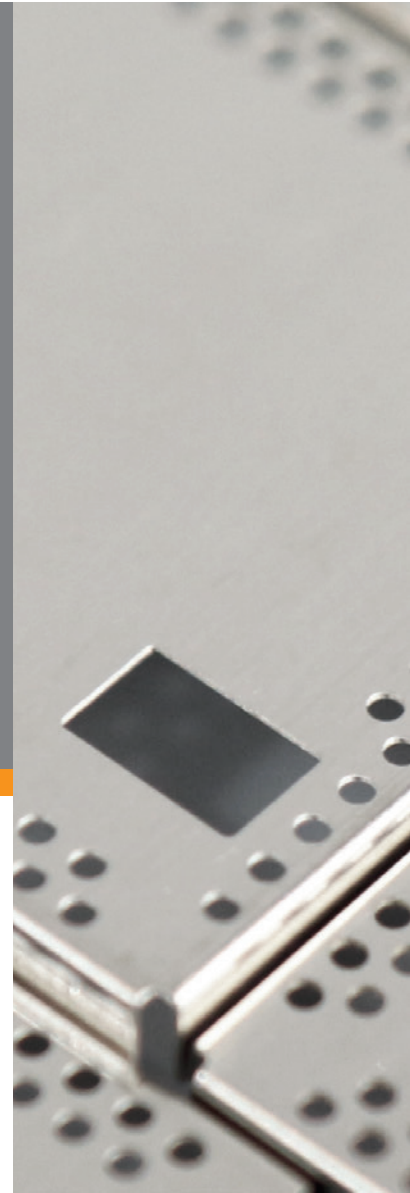
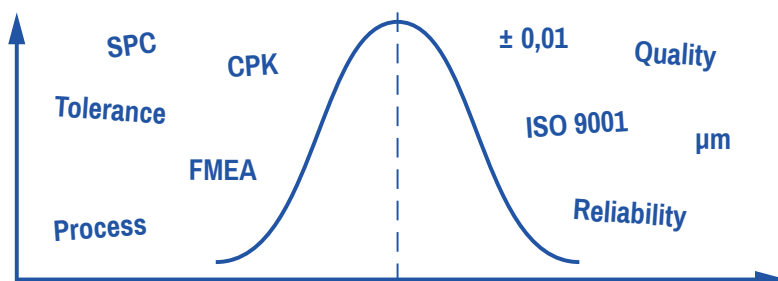
## Our winning formula is the symbiosis of tradition and innovation.

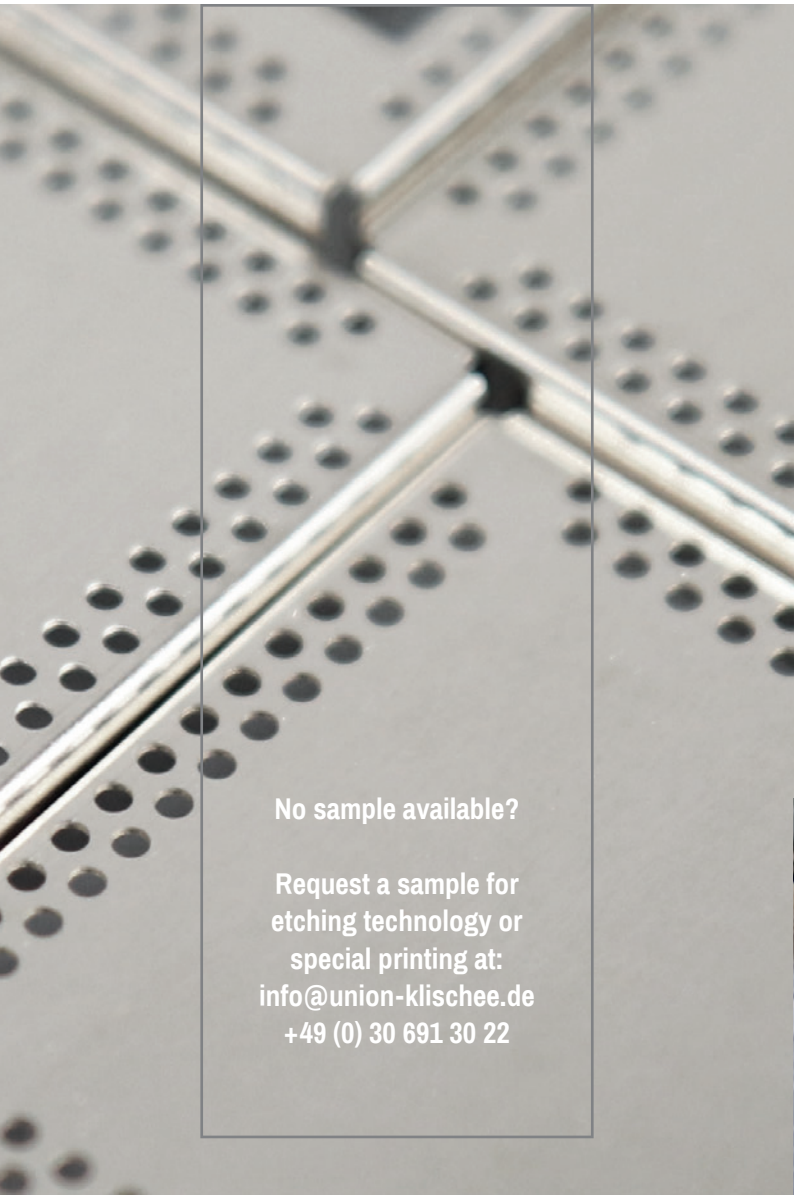
With over 40 years of experience, we specialise in the fields of contour-etched parts, screen printing, printing on 3D objects and digital printing. With these different printing techniques and manufacturing processes under one roof, we are able to offer a wide range of products and a comprehensive portfolio of services.

Our customer base is made up of industrial companies from the fields of medical technology, measurement and sensor technology, precision engineering and mechanical engineering. We also provide our services to model construction companies, public services, advertising agencies and private individuals.

See how our specialists' extensive experience and expertise can benefit you.  
Contact us – we are happy to advise you!

We guarantee you high-quality, customer-focused and reliable cooperation, based on **quality management in accordance with DIN EN ISO 9001.**





No sample available?

Request a sample for  
etching technology or  
special printing at:  
[info@union-klischee.de](mailto:info@union-klischee.de)  
+49 (0) 30 691 30 22

- 1971** Founding of UNION-KLISCHEE  
Kurt Oelsch + Heiland & Schmidt OHG
- 1998** Introduction of digital printing & plotting
- 2004** Introduction of large-format digital printing
- 2008** Certification to ISO 9001
- 2010** Restructuring into UNION-KLISCHEE GmbH
- 2013** Introduction of UV printing process
- 2014** Patenting of IsoLam®

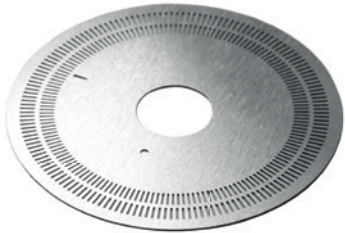
Production area: approx. 900 sqm  
Employees: approx. 20





## Etching technology

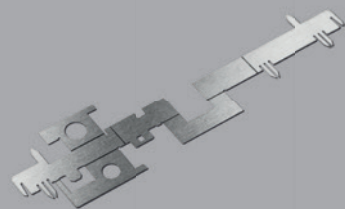
Etching is a photochemical process that allows contours to be created with high precision in thin sheets or metal foils, without burring or tension, via the removal of material. Using etching technology, we are able to manufacture special contour-etched parts such as shielding plates, code disks and model components. In many cases, the spray etching process is an effective alternative to punching and laser technology.



Code disk



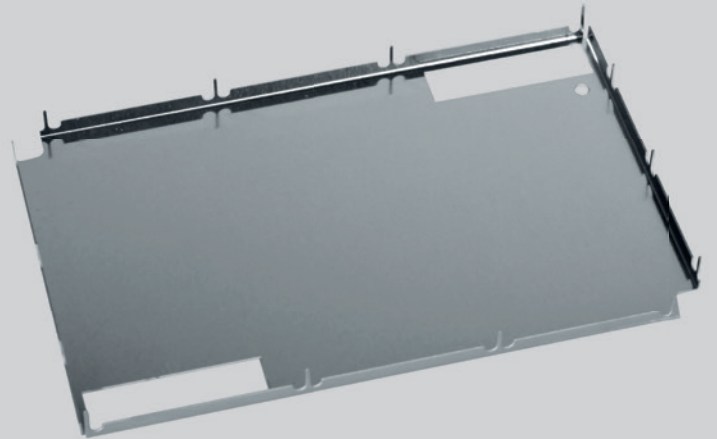
Spring



Device part



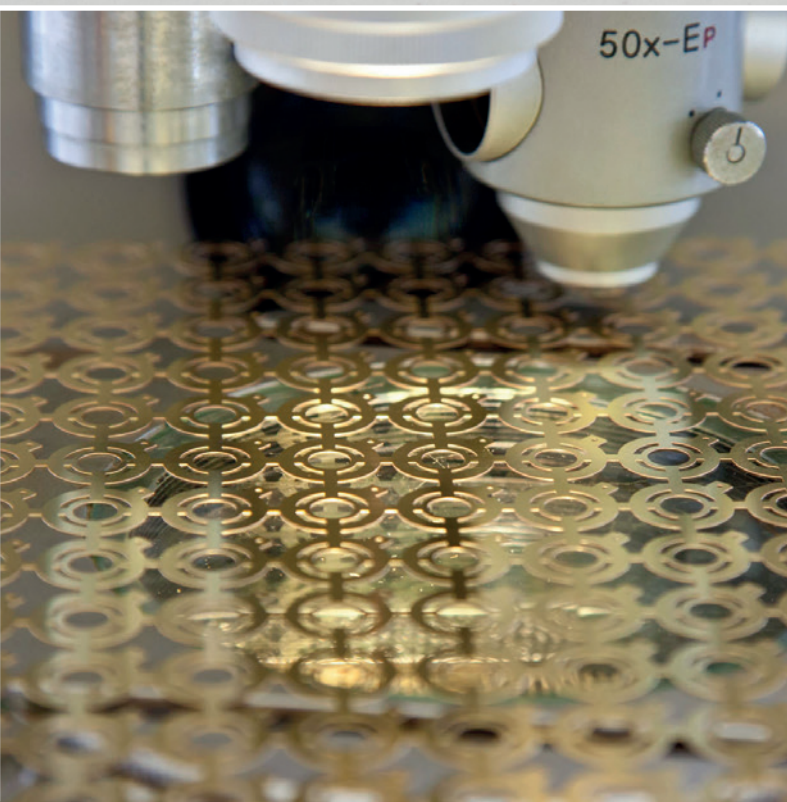
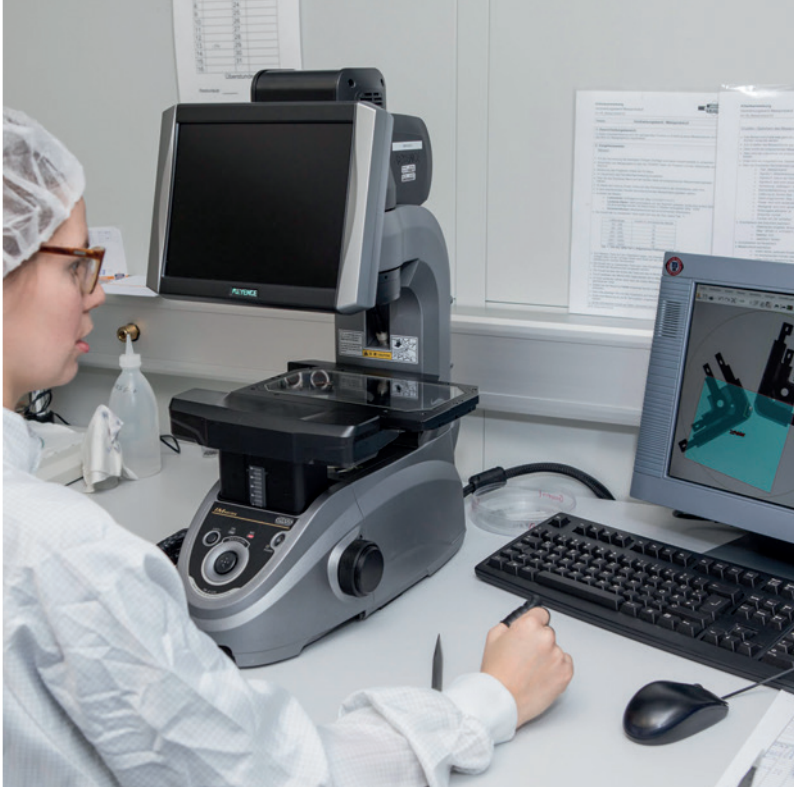
Measuring grid



Shielding plate



Sliding contact

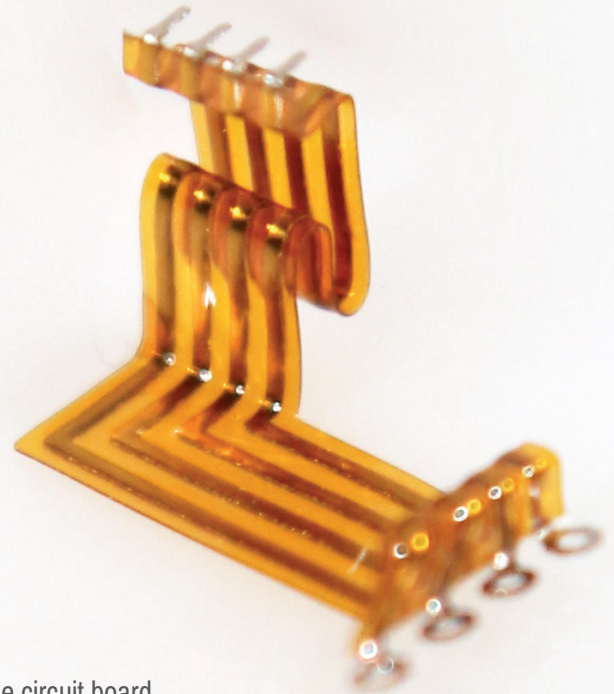
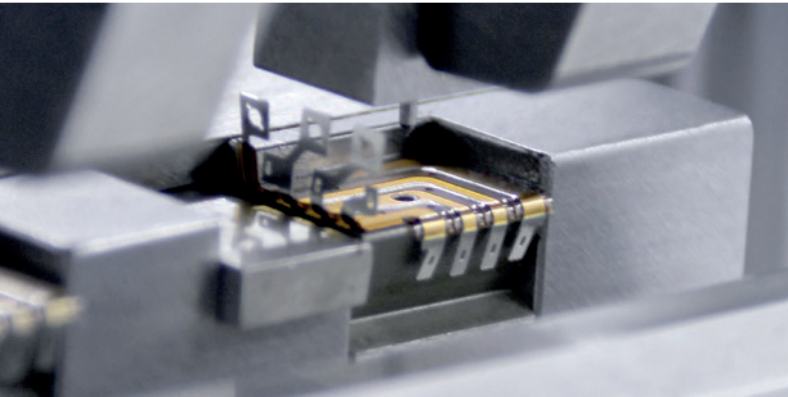
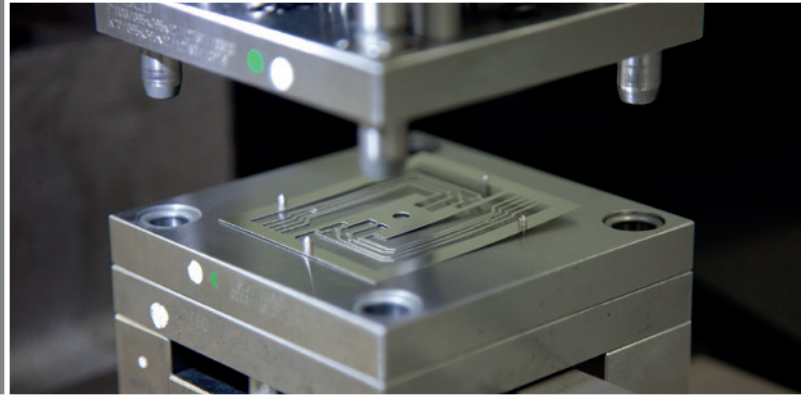


Contact spring

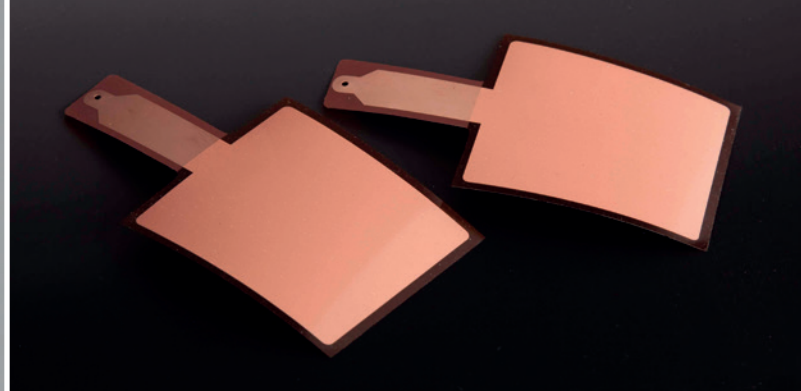
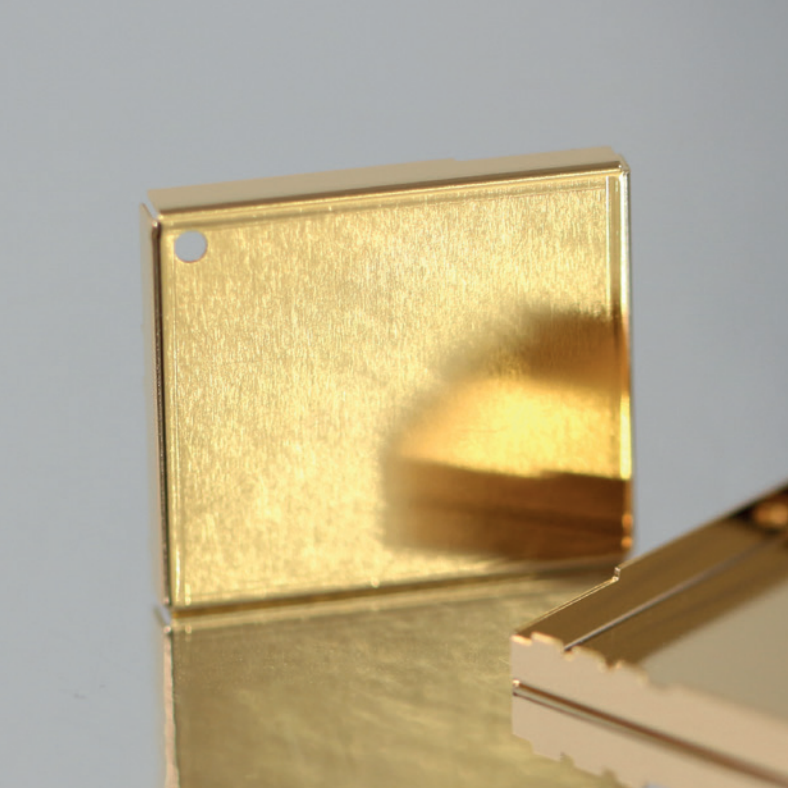


## IsoLam®

The IsoLam® manufacturing process was developed by us, and allows the specialised production of 3D printed circuit boards under clean room conditions. The IsoLam process also lets us produce flexible circuit boards. IsoLam® is a registered process and complies with the stringent requirements of the medical technology sector.



Flexible circuit board



## Refinement & further processing

On request, we can also refine the finished items after manufacturing.

We offer various processes including bending, painting, printing, laminating, gold plating, nickel plating, die cutting, kiss cutting and foil stamping.



## Screen printing

Almost all materials, surfaces and formats can be printed on with screen printing. This process is used in nearly all commercial and industrial sectors. Using screen printing, we can produce stickers, signs, maintenance and safety labels, road signs, special foils and more in a wide range of shapes and designs.

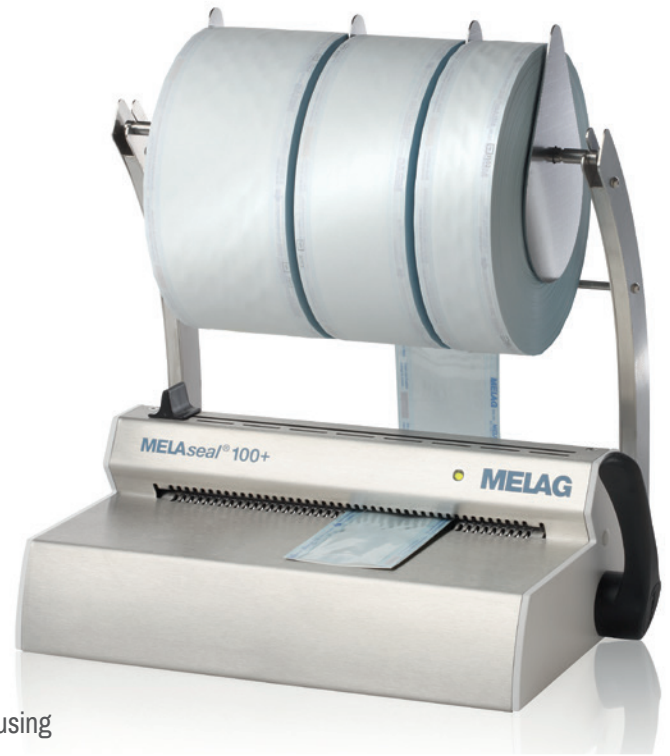
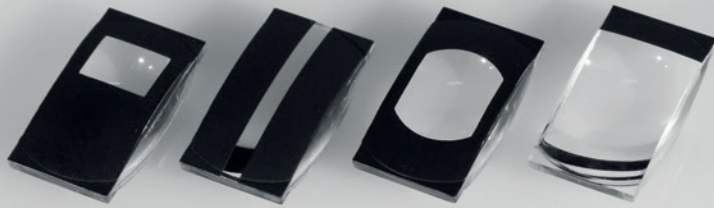


Photo: MELAG Medizintechnik oHG

Housing



Optical lenses



Contoured objects

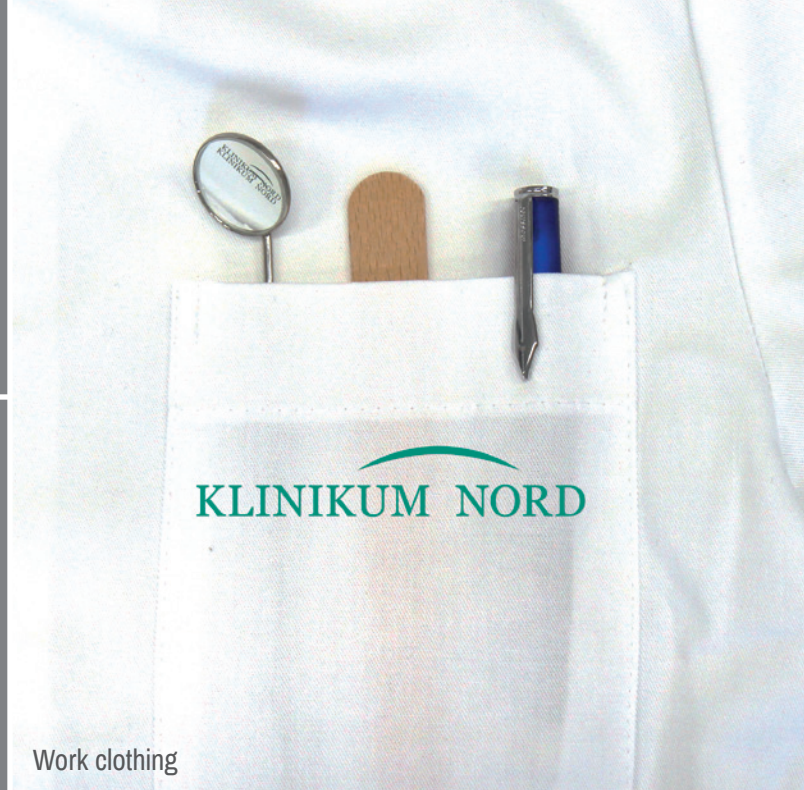
## Pad printing

Pad printing is a special process for printing on 3D objects, and is used where other printing processes come up against their limits. It allows us to print on contoured objects such as casings, keys, optical lenses and promotional items. Using pad printing, we can print on almost every uneven surface, deepening or other contour, with high and consistent precision – even in multiple colours.



## Textile printing

We are able to print on textiles using a variety of different processes. These include screen printing and transfer printing. We can also print on a wide range of clothing and materials. To do this, we use various heat transfer films, such as flex and flock films. Our diverse range of machines allows us to print even small quantities in multiple colours.



Work clothing



Plastic cases



Scale plates

## Digital printing

Digital printing involves the use of large-format printing, printing on 3D objects, plotting and the innovative technology of UV printing. Using digital printing, we can produce high-quality promotional material for retail and trade fairs, such as signage, labels, banners, display systems, posters, fine art prints and textiles. We are able to print on a wide range of substrates.

# Our product ranges



## Etched parts

- Equipment parts
- Grounding plates
- Shielding plates
- Screens
- Code disks
- Measuring grids
- SMD templates
- Model components
- Promotional items
- IsoLam®
- Bending
- Painting
- Printing
- Laminating
- Gold/nickel plating



## Screen printing

- Keyboard membranes
- Labels
- UV & weather-resistant signs
- Company labels
- Displays/posters
- Maintenance & safety labels
- Road signs
- T-shirts
- USB drives
- Die cutting & kiss cutting
- Bending/shaping
- Painting
- Laminating



If you're looking for something truly special, just ask us. As the leading company in special printing processes, we can offer you skilled, personalised advice, from your idea through to its realisation as a product.



## Pad printing

- Device housings
- Electrical components
- Car accessories
- Writing implements
- Toys and sporting goods
- Packaging products
- Promotional items
- Keyboards
- Tools
- Lenses & optical devices
- Watches and dials
- Medical devices
- Ceramics



## Digital printing

- Photo printing
- Display & signage
- Proofing
- Fine art printing
- Exhibition boards & stand-up displays
- Banners & backlights for light boxes
- Plotter fonts
- Textile finishing
- Advertising technology



UNION-KLISCHEE GmbH | Lankwitzer Straße 34 | 12107 Berlin

Phone +49 (0) 30 691 30 22 | Fax +49 (0) 30 691 30 23

info@union-klischee.de | www.union-klischee.de

**Opening hours:** Monday to Thursday 07:00 - 15:45, Friday 07:00 - 14:45

**We are happy to advise you and offer customised solutions!**